



13-19 Ocak 2014/ ANTALYA

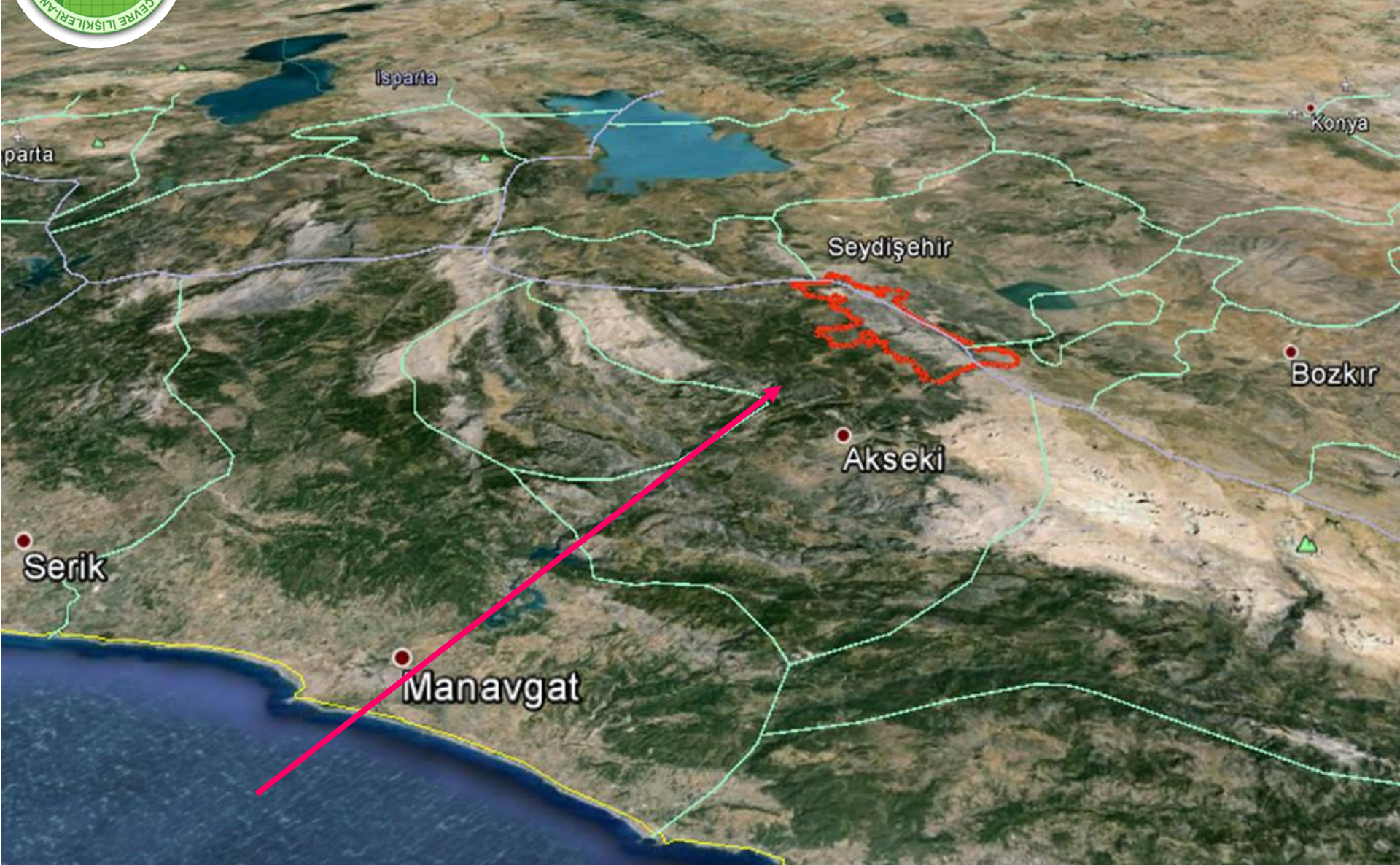
## GİDENGELMEZ DAĞLARI POTANSİYEL VEJETASYON SINIFLANDIRMASI VE HARİTALAMASI (HİYERARŞİK OLMAYAN HARİTALAMA)

Eğitmen : Dr. Ahmet MERT

# Vejetasyon Çevre İlişkileri - Analitik Değerlendirmeler



13-19 Ocak 2014/ ANTALYA

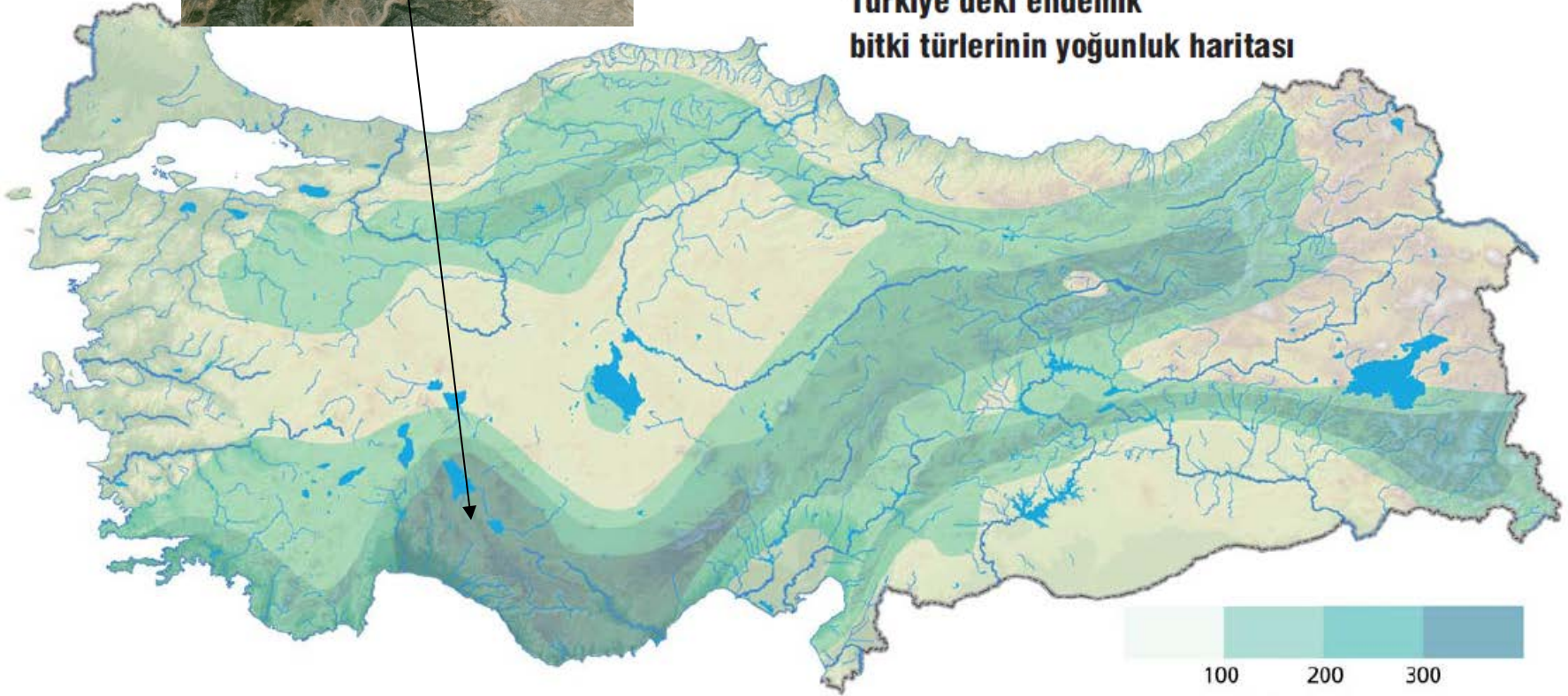


# Vejetasyon Çevre İlişkileri - Analitik Değerlendirmeler

13-19 Ocak 2014/ ANTALYA



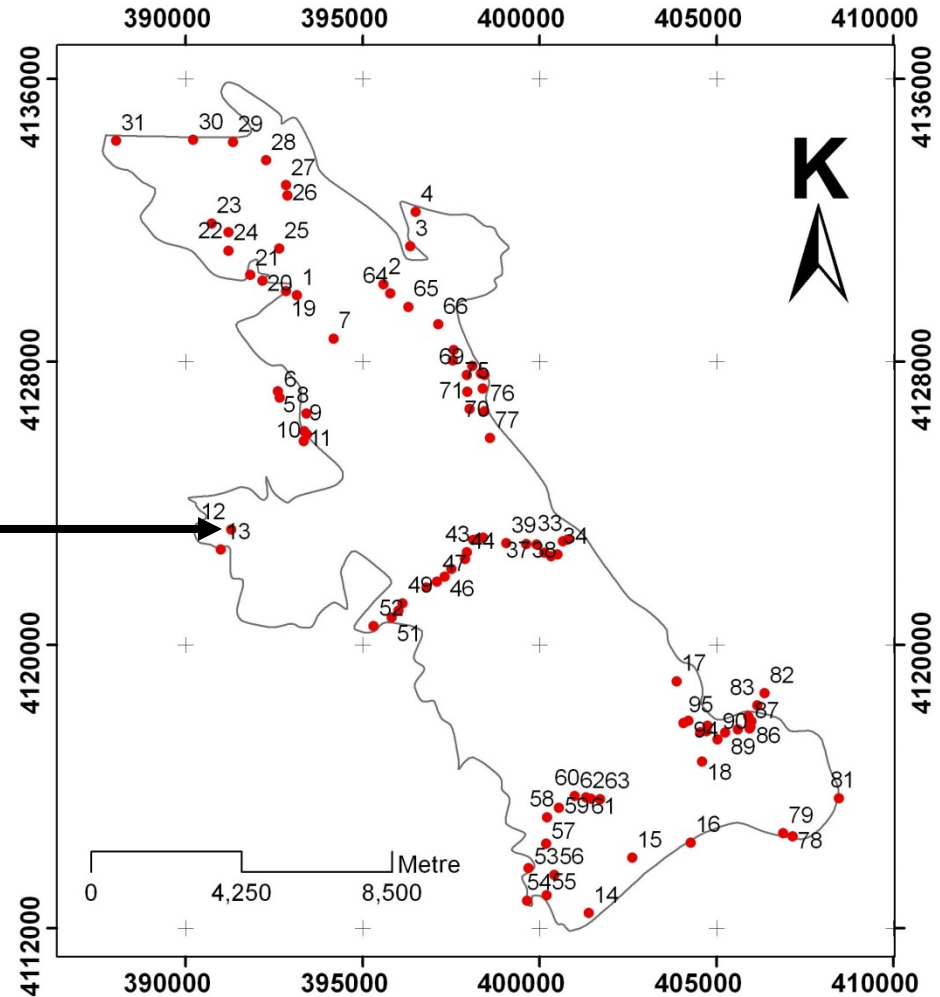
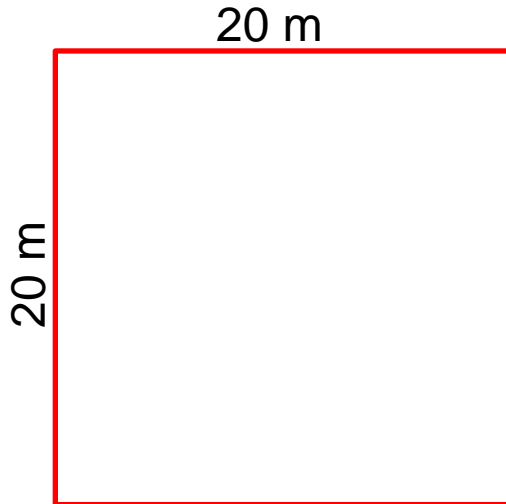
**Türkiye'deki endemik bitki türlerinin yoğunluk haritası**





## Arazi çalışmaları

- ENVANTER
- Enlem/boylam
- Bitki türleri



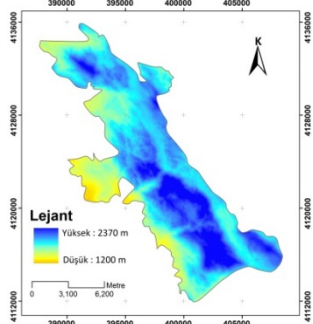
# Vejetasyon Çevre İlişkileri - Analitik Değerlendirmeler



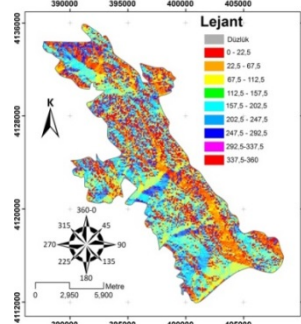
13-19 Ocak 2014/ ANTALYA

## Çevresel değişkenler

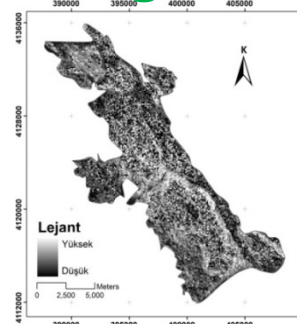
### Yükselti



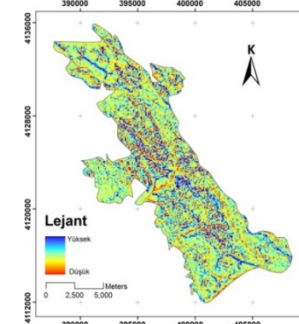
### Bakı



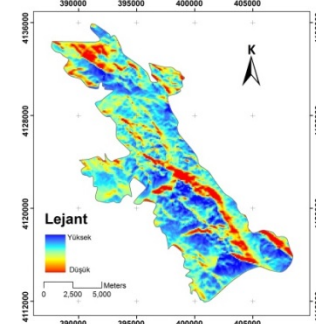
### Eğim



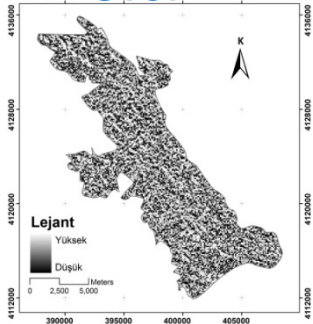
### TPI



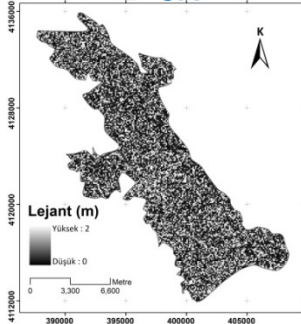
### Radi



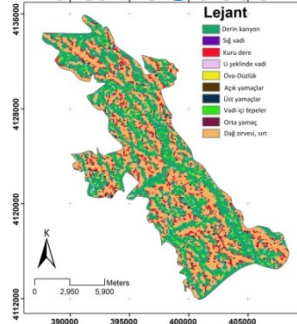
### Sıcı



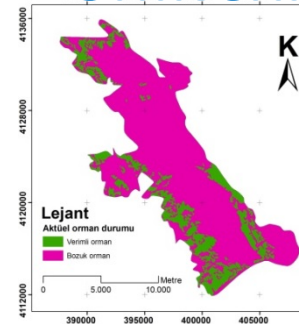
### Bui



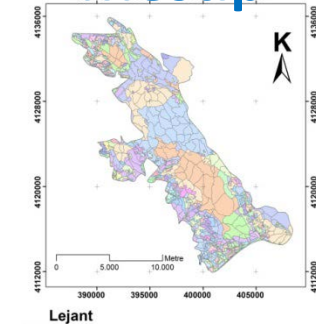
### Arzform



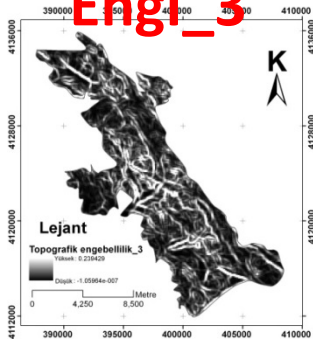
### Ormverim



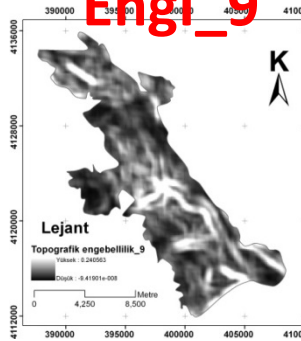
### Mestip



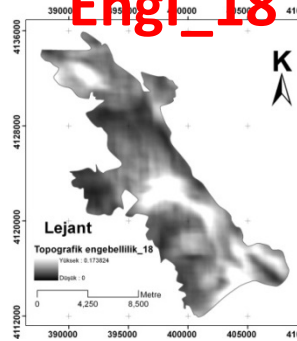
### Engi\_3



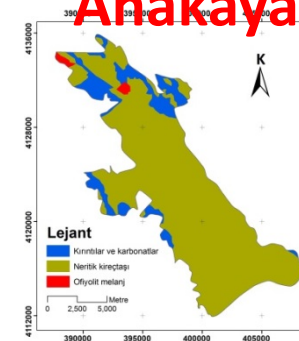
### Engi\_9



### Engi\_18



### Anakaya

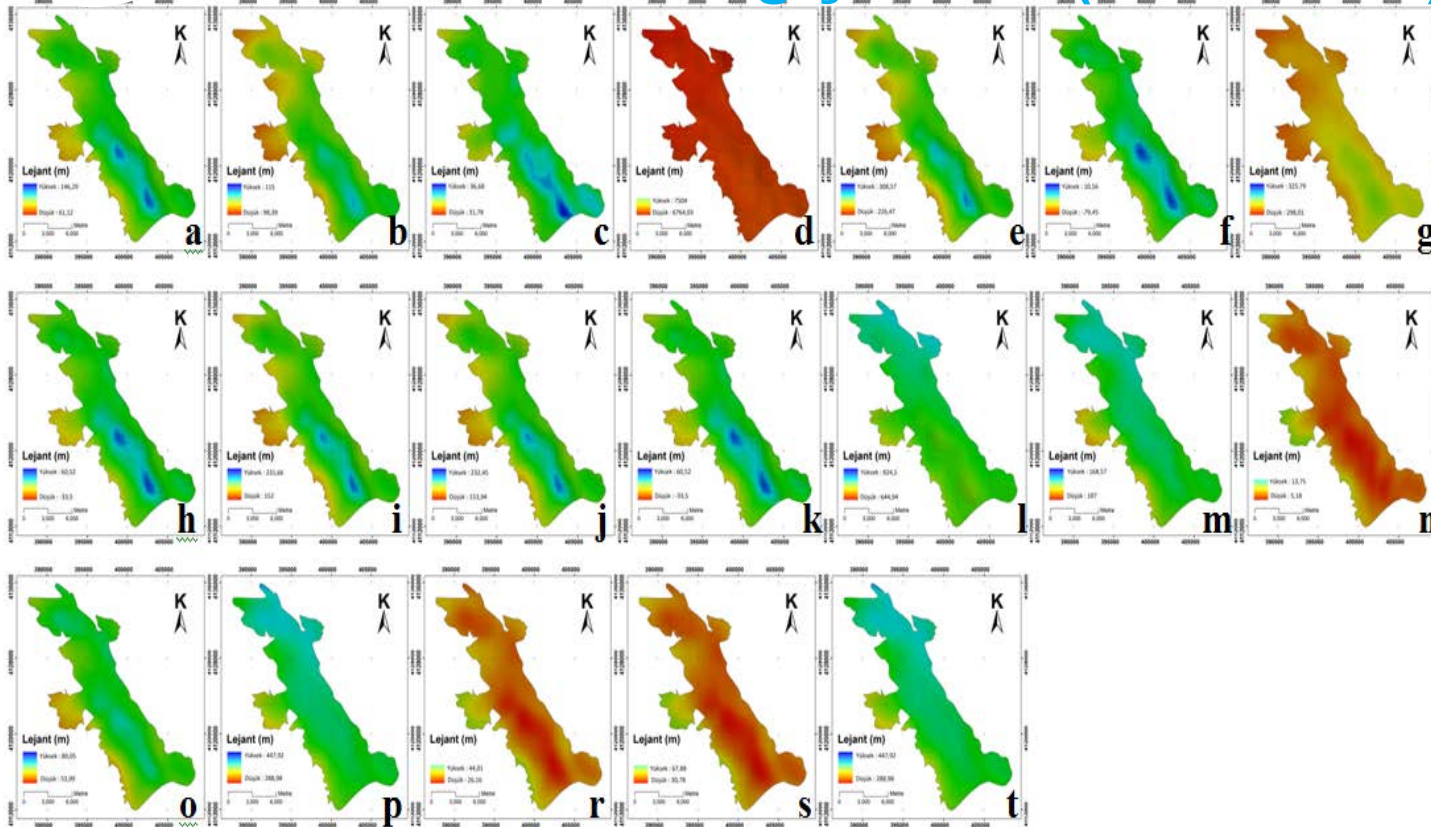


# Vejetasyon Çevre İlişkileri - Analitik Değerlendirmeler



13-19 Ocak 2014/ ANTALYA

## İklim değişkenleri (Bio1-Bio19)



	1	2
bio1	,956	-,084
bio2	,790	,181
bio3	,495	-,144
bio4	,162	,098
bio5	,916	-,126
bio6	,803	,130
bio7	-,577	-,154
bio8	,885	,055
bio9	,955	-,177
bio10	<b>,959</b>	-,158
bio11	,885	,055
bio12	,432	,327
bio13	,525	,743
bio14	,827	-,327
bio15	,826	-,149
bio16	,353	<b>,899</b>
bio17	,675	-,515
bio18	,819	-,351
bio19	,353	,898

Component	Initial Eigenvalues			Extraction Sums of Squared Loadings		
	Total	% of Variance	Cumulative %	Total	% of Variance	Cumulative %
1	10,229	53,835	53,835	10,229	53,835	53,835
2	2,983	15,698	69,534	2,983	15,698	69,534
3	1,636	8,610	78,144			



## Bağımlı değişkenler

Vejetasyon sınıfları (nominal-katagorik veri) beta çeşitliliği

## Çıktılar

\*Potansiyel vejetasyon dağılım haritası

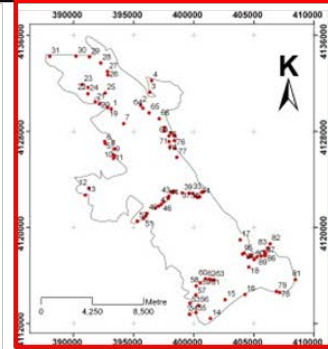
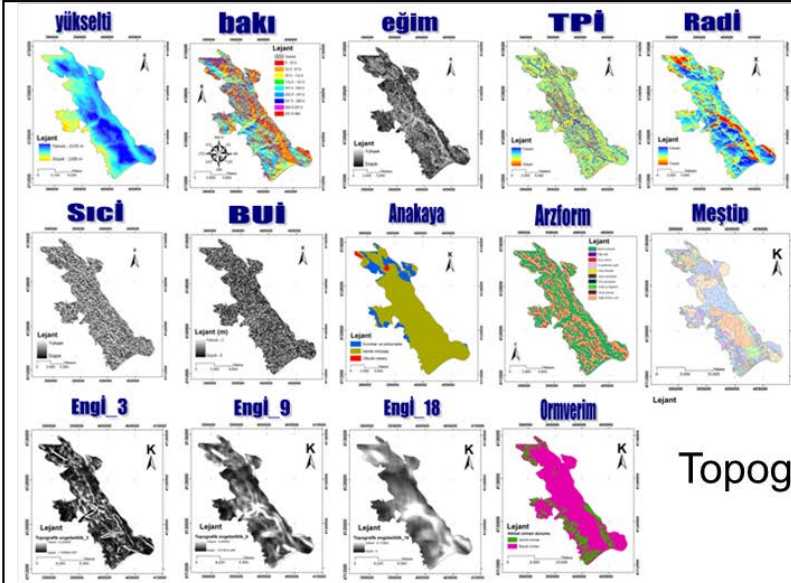
# Vejetasyon Çevre İlişkileri - Analitik Değerlendirmeler



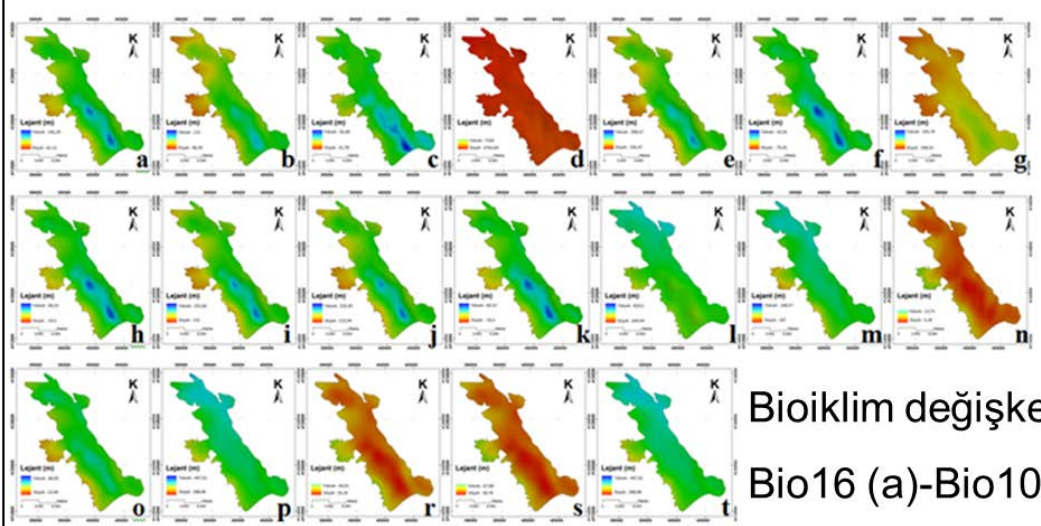
13-19 Ocak 2014/ ANTALYA

Bağımsız değişkenler

Bağımlı değişken



Topografik değişkenleri

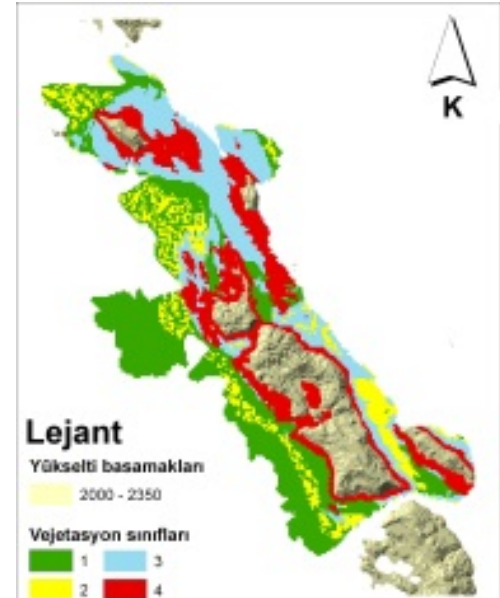


Bioiklim değişkenleri  
Bio16 (a)-Bio10 (t)

Modelleme



Model yaygınlaştırma





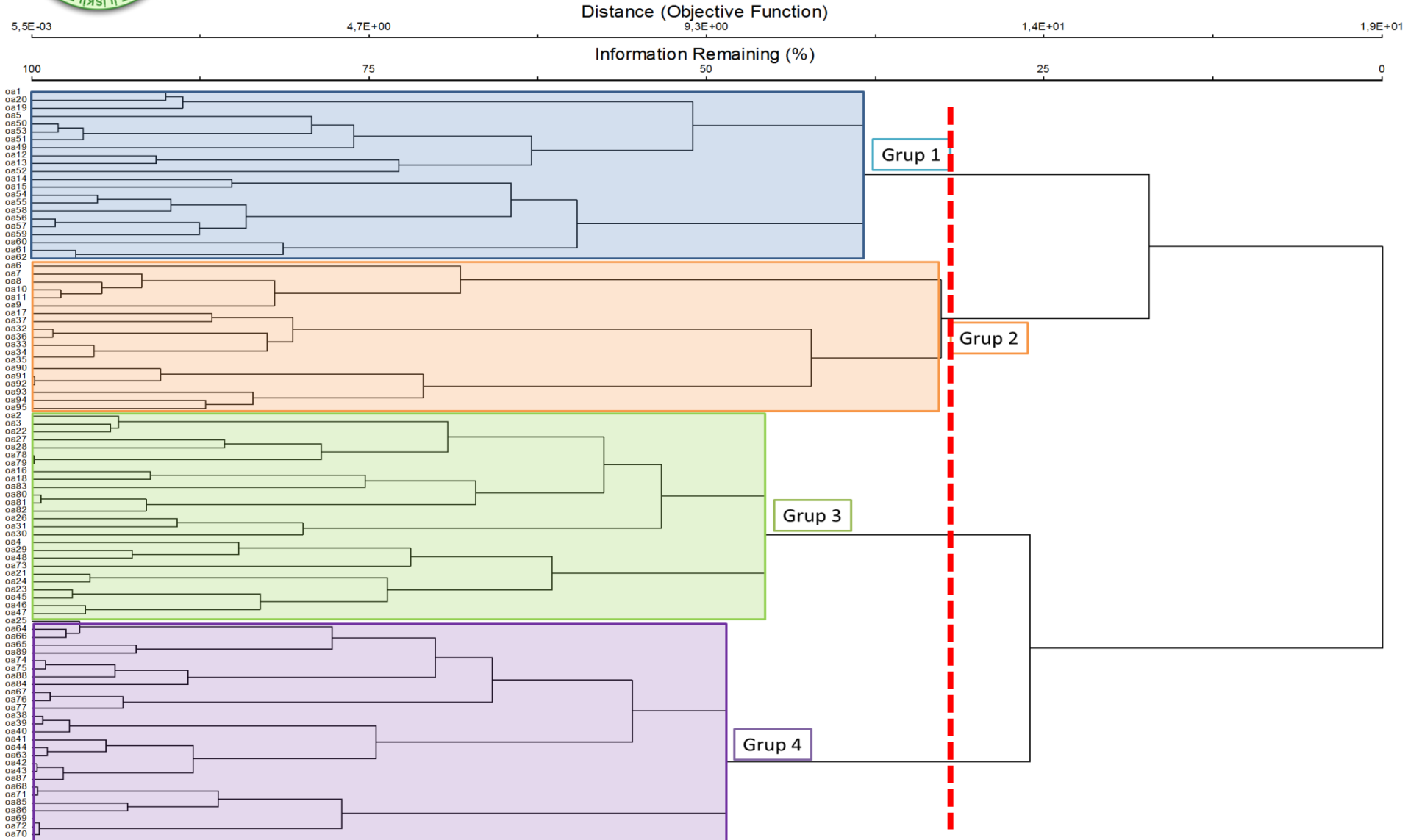
# Vejetasyon Çevre İlişkileri - Analitik Değerlendirmeler



13-19 Ocak 2014/ ANTALYA

## Vejetasyon grupları

(sorensen benzelik indisi/wards metodu ile)



# Vejetasyon Çevre İlişkileri - Analitik Değerlendirmeler



13-19 Ocak 2014/ ANTALYA

## Grup 1



*Quercus coccifera* L.



*Salvia tomentosa* MILLER



*Styrax officinalis* L.



*Quercus cerris* L.

## Grup 2



*Acer monspessulanum* L.



*Dryopteris pallida* (BORY)  
FOMIN



*Ulmus glabra* HUDSON



*Abies cilicica* (ANT. & KOTSCHY)  
Carr. subsp. *isaurica* COODE & CULLEN



*Populus tremula* L.

## Grup 3



*Astragalus microcephalus* WILLD.



*Cedrus libani* A. RICH



*Digitalis ferruginea* L.



*Pinus nigra* J. F. ARNOLD

## Grup 4



*Berberis crataegina* DC.



*Daphne oleoides* SCHREBER



*Juniperus communis* L.  
subsp. *nana* Syme.

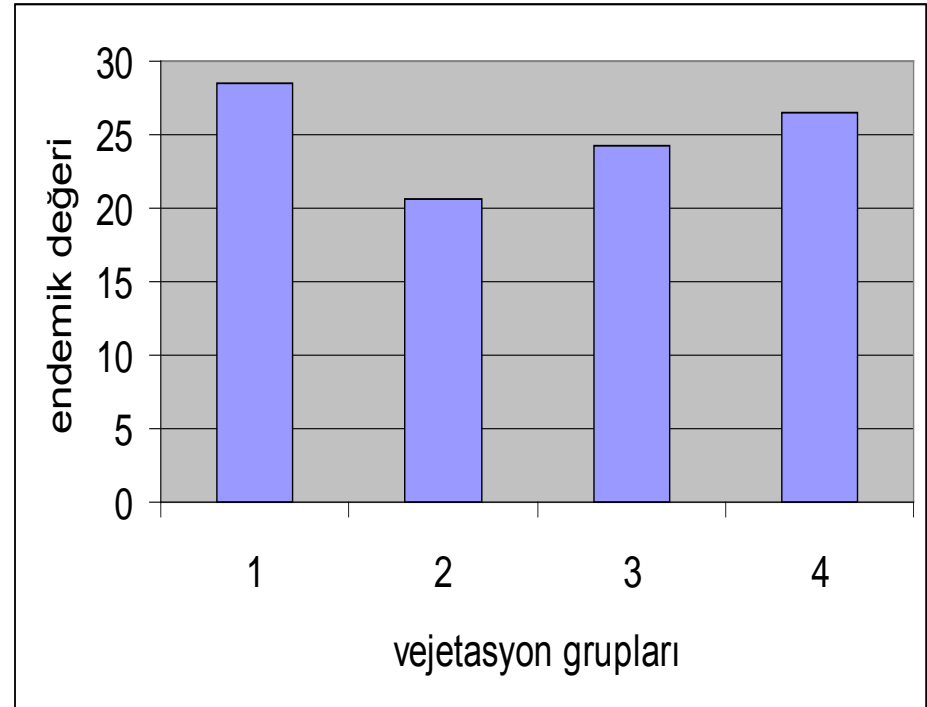
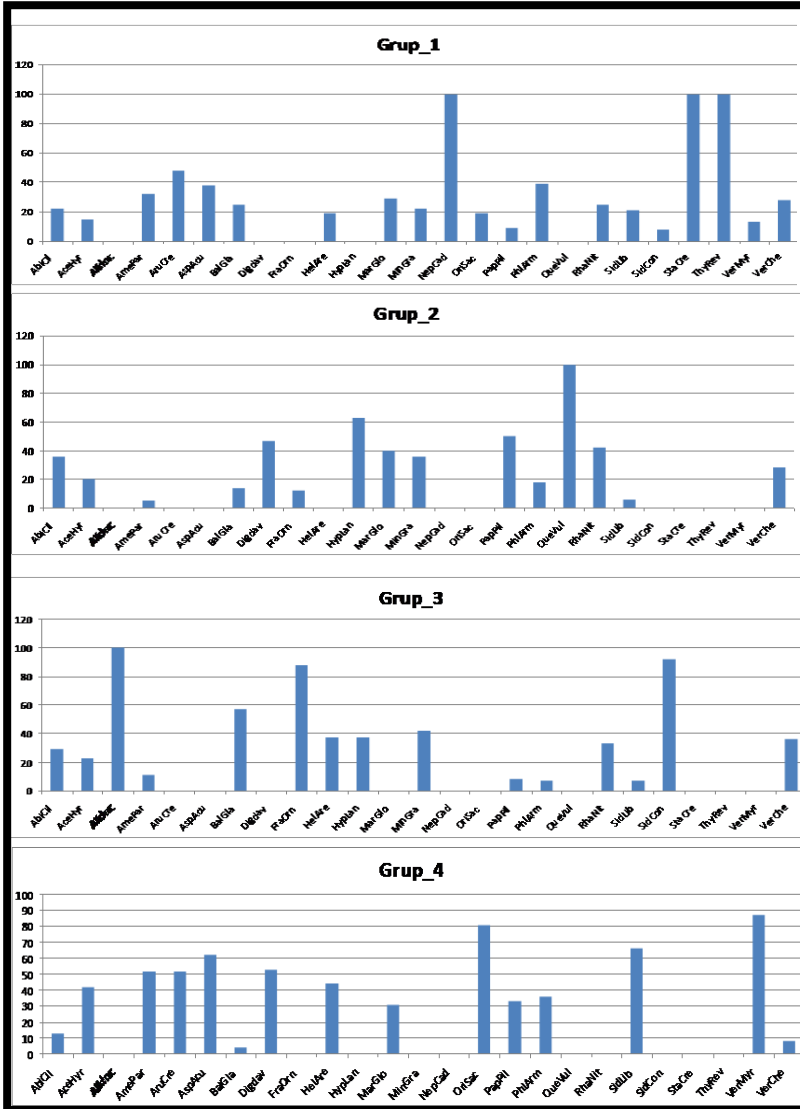


*Rhamnus oleoides* L.

# Vejetasyon Çevre İlişkileri - Analitik Değerlendirmeler



13-19 Ocak 2014/ ANTALYA



Vejetasyon gruplarının % koruma değerleri



# Vejetasyon Çevre İlişkileri - Analitik Değerlendirmeler



13-19 Ocak 2014/ ANTALYA

## Potansiyel vejetasyon dağılım modeli ve haritası

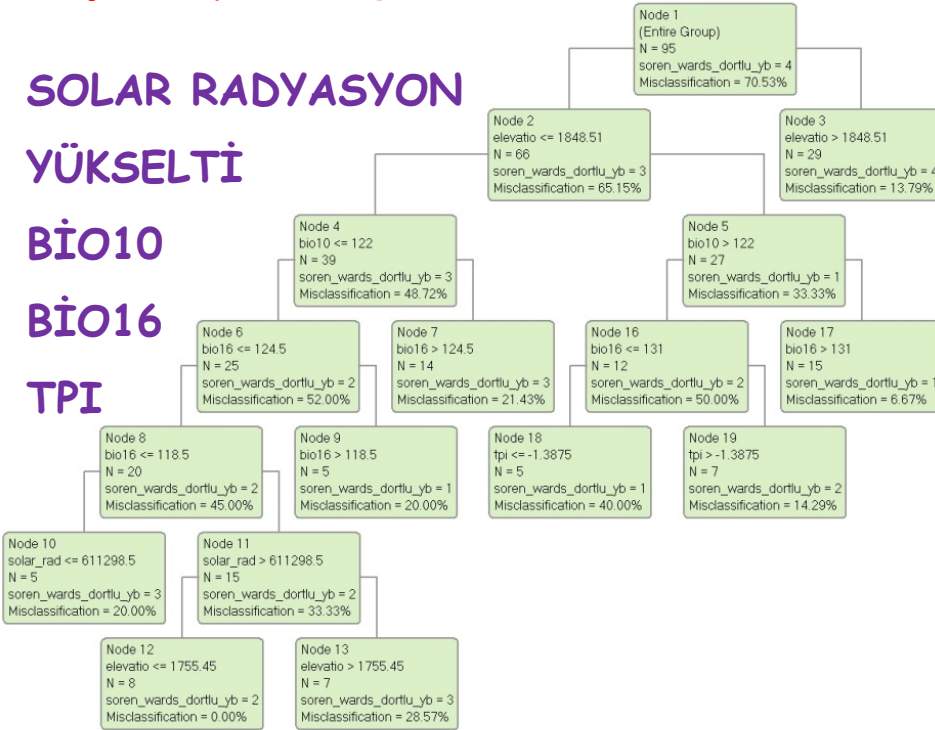
SOLAR RADYASYON

YÜKSELTİ

BIO10

BIO16

TPI

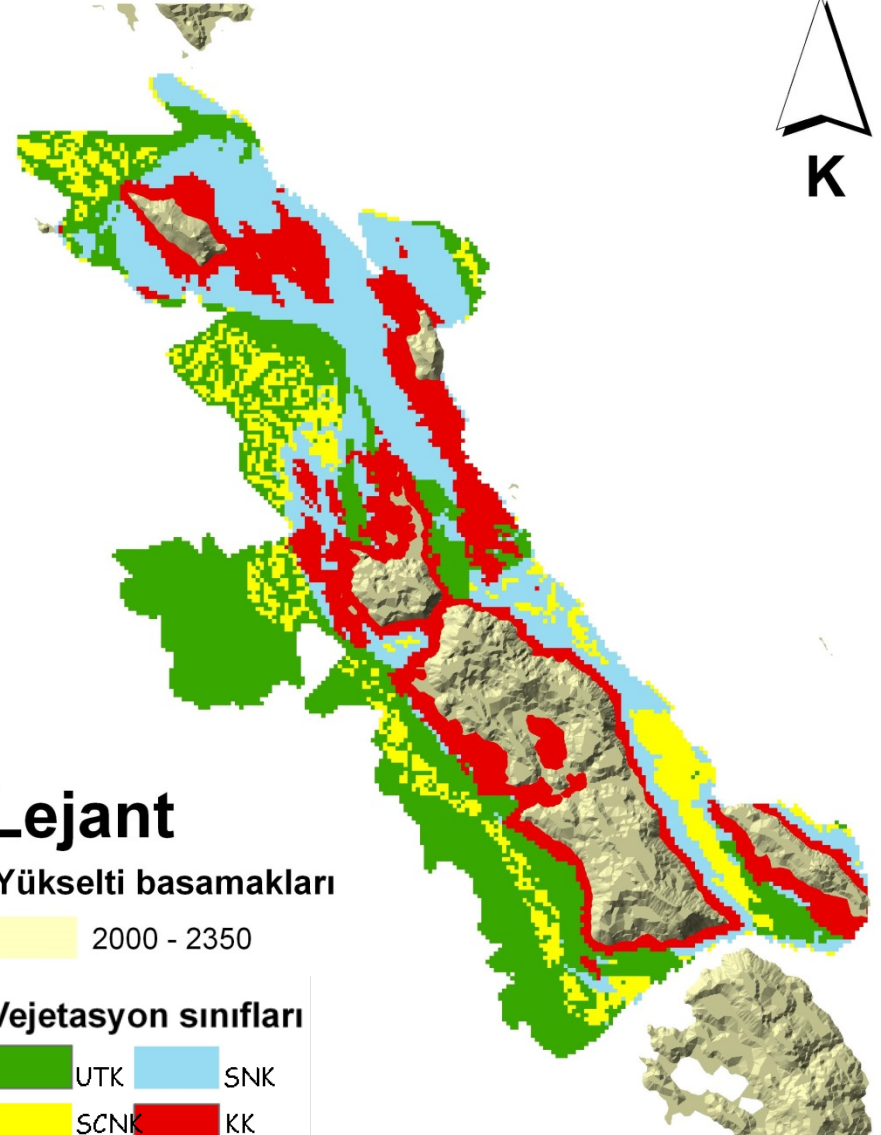


Yeşil : orta akdeniz

Sarı : üst akdeniz

Mavi : dağlık/tepelik

Kırmızı : yüksek dağlık





13-19 Ocak 2014/ ANTALYA



# TEŞEKKÜRLER